



## **CODESYS SoftMotion Light**

CODESYS SoftMotion Light extends the functional range of CODESYS Control SL systems from pure logic to motion control.

### **Product description**

CODESYS SoftMotion Light allows to command CiA 402 compatible drives for single axis movements (not synchronized).

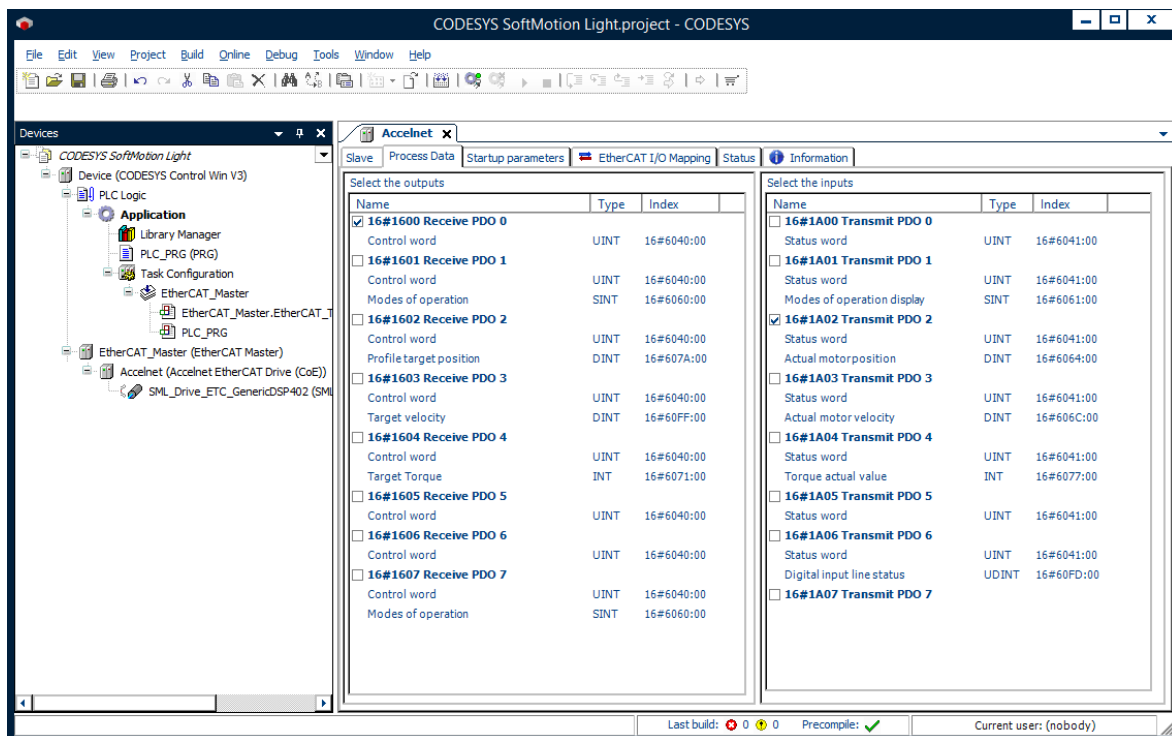
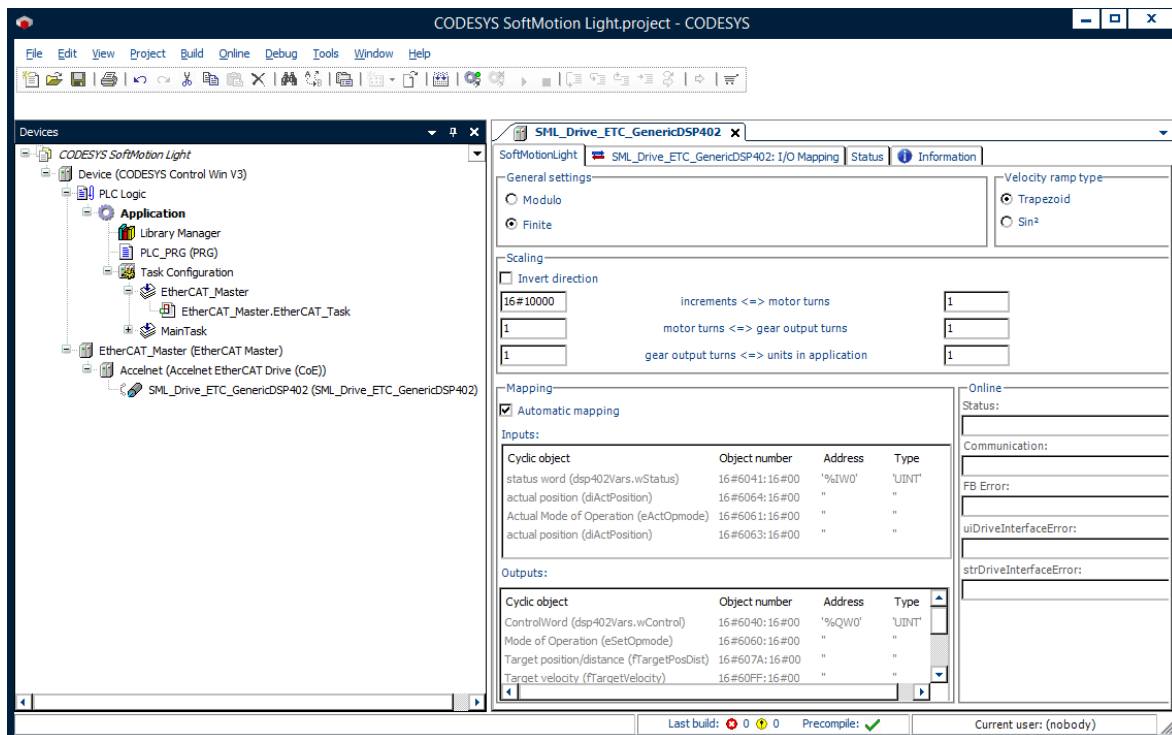
In contrast to SoftMotion Axes and SoftMotion Axis Groups/CNC Interpolators, the calculation of the axis movements is not done within the controller. With SoftMotion Light movements of the drive are just commanded and supervised (status) by the PLC and executed by the drive. The trajectory calculation is done in the drive.

SoftMotion Light is suitable for applications with multiple axes for single axes movements and for controller tasks requiring a low bus and computing load (CPU).

### **Scope of the SoftMotion Light library**

- MC\_MoveAbsolute / MC\_MoveRelative
- MC\_MoveVelocity
- MC\_Stop / MC\_Halt
- MC\_Home
- MC\_Power / MC\_Reset / MC\_ReadStatus
- SML\_ReinitAxis / SML\_ChangeAxisConfig
- Visualization templates (analogue to SoftMotion)
- Commissioning assistance (SML\_StartupDrive)

Configuration and commissioning of the drives is described in detail in CODESYS online help (chapter "SoftMotionLight").



## General information

### Supplier:

CODESYS GmbH  
 Memminger Strasse 151  
 87439 Kempten  
 Germany

### Support:

Technical support is not included with this product. To receive technical support, please purchase a CODESYS Support Ticket.

<https://support.codesys.com>

### Item:

CODESYS SoftMotion Light

### Item number:

2305000002

### Sales/Source of supply:

CODESYS Store  
<https://store.codesys.com>

### Included in delivery:

- CODESYS package with SoftMotion functionality
- License key

## System requirements and restrictions

<b>Programming System</b>	CODESYS Development System V3.5.19.10 or higher
<b>Runtime System</b>	CODESYS Control Version 3.5.19.0 or higher
<b>Supported Platforms/ Devices</b>	<p>All supported by CODESYS:</p> <ul style="list-style-type: none"> <li>• Real-time capable operating system platforms</li> <li>• CPU platforms with available FPU (Floating Point Unit)</li> <li>• Devices with integrated fieldbus (EtherCAT, CAN/ CANopen)</li> </ul>
<b>Additional Requirements</b>	<p>WIBU Codemeter Support</p> <p>SoftMotion Light works with CiA 402 compatible drives with CANopen or EtherCAT. Compatibility can be checked with the test project <i>SML_CompatibilityCheck_DS402.project</i></p>
<b>Restrictions</b>	-

---

**Licensing**

Single device license: The license can be used on the target device/PLC on which the CODESYS runtime system is installed.

Licenses are activated on a software-based license container (soft container), which is permanently connected to the controller. Alternatively, the license can be stored on a CODESYS Key (USB dongle). By replugging the CODESYS Key, the license can be used on any other controller.

---

**Required Accessories**

Optional: CODESYS Key

---

*Note: Technical specifications are subject to change. Errors and omissions excepted. The content of the current online version of this document applies.*

Creation date: 2024-08-30